

# BRUSHES

## BLOCK BRUSH - MODEL XB

Effective. Reliable. Durable. Designed to mount on a fixed or cantilever spring, the XB brush maintains a continuous scraping force for the removal of rust, scale and other contaminants adhering to the pipe wall. Trims are secured to a strong, custom-made plate, not pre-perforated sheets.

### Features & Benefits:

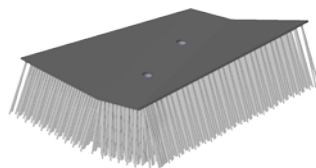
#### FLAT

- Excellent for moderate to heavy cleaning
- Cleans powerfully, removing wax and scale.
- Effective in multi diameter pipelines
- Navigate through pipeline anomalies
- Model XB fits 20" to 56" pigs (XB-S for 16"-18")

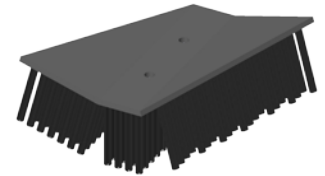
#### PENCIL

- Excellent for moderate to heavy cleaning
- Each wire acts with independent force, entering the pit and removing debris.
- Best choice for cleaning multi diameter pipelines.
- Navigate through pipeline anomalies.
- Model XB fits 20" to 56" pigs (XB-S for 16"-18")

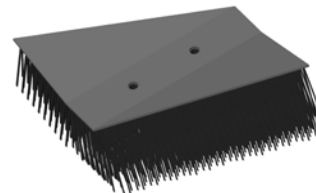
Model XB Plastic



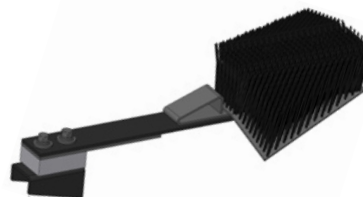
Model XB Pencil



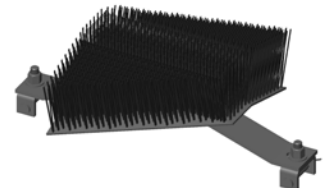
Model XB Flat



Model XB Cantilever Assembly



Model XB Fixed Assembly



Pig Size	Model	Material			
		Flat Wire	Flat Wire - SS	Flat Plastic	Pencil Wire
16" - 18"	XB-S	94-0400-00	94-0404-00	94-0408-00	94-0409-20
20" - 56"	XB	94-0410-00	94-0414-00	94-0418-00	94-0419-20

### Options Available:

- Trim Material – Carbon Steel, Stainless Steel & Plastic (Flat only).
- Custom trim lengths and diameters are available.
- XB fitted to a fixed spring assembly.
- XB fitted to a cantilever-style spring.